



Lexion®

Installation manual

INSTALLATION

Basics

Lexion is designed to work on a computer with Windows 98/NT/2000/ME/XP/Vista, a Pentium II processor or better with at least 64Mb internal memory. The monitor needs to be set to at least 16 million colours. If it has 256 colours the colour effects of the program will be impaired and some parts even unusable.

The program has to be installed on the hard disk where a total space of approximately **500 Mb** will be used. This applies for both Lexion and Mini-Lexion. If your version is of a later issue than 4.3, more space might be needed. The installation program will notify.

A **printer** is convenient for your own part but not required to make use of the program.

It is vital that the computer is equipped with a **sound card** or speech synthesis. The speech synthesis may be of the type Infovox 230/330/Desktop, or any SAPI-connected speech synthesizer that only requires an existing sound card. The sound card can be any type supported by Windows, e.g. Sound Blaster.

Regarding network see below, page 5.

You should be familiar with the Windows operating system and understand what we mean when talking about scroll bars, drop-down lists, and so on.

Preparations

Check that the package contains the following and that nothing is damaged:

- a Lexion manual
- this installation manual
- one Lexion CD
- one or more Mini-Lexion CD:s

Read the conditions on page 4 in the manual before breaking the seal.

Break the seal with a pair of scissors and empty the contents carefully making sure that no glue will stick to the CD.



Install Lexion

(For installing Mini-Lexion, see next section.)

Lexion must be installed on the hard disk. You must have administrator rights. The system folder must not be write protected. After installation, the CD need not be in the CD drive for Lexion to run.

Install as follows.

- Shut down all other programs.
- Insert the CD into the CD drive. (If the installation program does not start by itself, select Start, select Run... Write "*e*:SETUP", where *e* is the drive letter of the CD drive, then click OK.)

Before the copying starts you will be asked what folder name you want for Lexion. You can accept the suggestion of the installation program.

In the Start menu shortcuts are automatically created with which you start the program. A shortcut is also created on the desktop. When creating an archive for your users (if you are not connected to a network), they will be given their own

shortcuts in another group in the Start menu, with which they will start their own personal exercise archives in Lexion (see the manual)

If you are upgrading from an older Lexion version, Lexion will, on the first run, update several of its data files which might take a few seconds. If you have nothing of value in the older version, it is recommended that you first delete it completely from the hard disk before you install the CD; this takes care of the problem with remaining obsolete files.



Install Mini-Lexion

If you have installed Lexion you should not install Mini-Lexion.

What is Mini-Lexion?

Mini-Lexion is a smaller 'empty' version of Lexion that lacks linguistic material and the capability to be adapted to the user. Mini-Lexion, however, contains all the pictures and all the sound recordings that are found in the normal Lexion. Mini-Lexion requires the installation of **exercises** sent via **diskette**, **e-mail** or **USB memory** to be able to work. One exercise diskette, etc., contains your adaptations and word lists to one pupil/patient. After installation of the exercise diskette, etc., Mini-Lexion only works for that user (or for several users if they have been assigned to the same Mini-Lexion.) Read everything about Mini-Lexion in the manual. The sending of exercises is also described there.

Installation

The CD with Mini-Lexion must be installed on the hard disk. After installation, the CD need not be in the CD drive for Mini-Lexion to run.

- Shut down all other programs.
- Insert the CD into the CD-drive. (If the installation program does not start by itself; select Start, select Run... Write "*e*:SETUP", where *e* is the drive letter for the CD drive, click OK.)

After the installation Mini-Lexion will start automatically. When Mini-Lexion has started you will be told to install exercises sent via diskette, e-mail, or a USB memory stick. Follow the instructions on the screen to let Mini-Lexion install the contents. If exercises have been sent by e-mail, exit Lexion and start the e-mail application.

Double-click on the e-mail attachment and it will install itself into Mini-Lexion. When the exercises have been installed, a shortcut in the Start menu is created with which the user will start the Mini-Lexion with the personalized exercises. Thus, exit Lexion and start it again next time with the new shortcut in the Start menu.

Licence information

If your Lexion version starts the first time by asking you for licence information, please enter the information provided to you by your retailer. Your Name, Organization, and Licence number must be filled in exactly as it is written in the information given to you. Mini-Lexion does not require licence information.

Speech synthesis

If you have acquired and installed some kind of speech synthesis you should start Lexion and select Speech synthesis settings in the Global menu. There you adjust Lexion for your speech synthesis, see the manual.

Network

Lexion can be used in a network. When running the program the current directory must always be the folder where Lexion is installed. The teacher/speech therapist, pupil/patient, should be given different rights, see below. Therefore, install Lexion in the following way.

Installation

The CD with Lexion is installed in a folder on the server. You should be logged on as an administrator with maximum privileges.

- Insert the CD into the CD drive. (If the installation program does not start on its own, select Start, select Run... Write "e:SETUP", where e is the drive specification for the CD-drive, click OK
- Install into a folder on the server that all clients can see, for example, \Lexion4. Run a test of the program afterwards. Enter the Licence information if requested. If you are updating from an older version of Lexion to a newer one, Lexion will update a number of its data files, which takes a few minutes.
- From each client where Lexion will be used, start the program \Lexion4\network\setup.exe (this folder will also be found on the CD). When the setup program asks where Lexion resides, specify the Lexion folder on the server. Let the setup program make the installation of the **system files** for the client and place **shortcuts** to Lexion on the desktop and in the Start menu. See the folder *Sysinfo* on the CD if you want information on the Lexion system files.
- All Lexion users must have a **password** when using Lexion in a network, (see the manual)!

A common WAV folder

In the rare case of a server serving several schools at the same time, we suggest that a separate installation is made for each school. To avoid a lot of space being used for the same things, all 'WAV' folders can be emptied and all the schools can share the same folder located anywhere on the system visible by all clients. The old WAV folder must exist but be empty. The new folder must also be called WAV. In every Lexion folder, create a text file called LEXIONWAV.DAT. This file must contain one line. On this line, specify the path to the common wav folder. If you have placed the folder in E:\LEXIONCOMMON, that is, the file specification for the sound files is E:\LEXIONCOMMON\WAV*.WAV, then write in LEXIONWAV.DAT the path "e:\lexioncommon\" with a trailing backslash, don't write "wav" at the end. Lexion will automatically recognise the LEXIONWAV.DAT file and search for sound files in the specified location.

Location of results

There are three ways to organize working with Lexion in a network:

Results in \Lexion4\usr: If in *Create a new user* you do not state the path in the network, the result files of the pupils/patients will be stored in \Lexion4\usr (read more about location of the users' result files, etc. in the manual). When the pupil/patient is working with the computer the folder \Lexion4\usr must have no restrictions. **\Lexion4** and all other subfolders in \Lexion4 should have only 'readfile' rights. When the teacher/speech therapist is doing customisation work in Lexion, the whole Lexion4 system must be unrestricted, i.e. the Lexion4 folder and all the subfolders. *The disadvantage* with this method is that the pupils/patients may damage the contents for each other in the folder \Lexion4\usr.

Results on another unit: In order to use Lexion's capability to redirect the result files of the pupils/patients to another unit in the network it is required that you state the path when asked to under *Create a new user*. Teachers and speech therapists should be instructed what path to fill in. The target should, if possible, be mapped in such a way that the teacher/speech therapist can view the results of the pupils/patients although the teacher/speech therapist is logged on, or it will be impossible as a teacher/speech therapist to state the right path for the pupil's/patient's results. When the pupil/patient is working with Lexion then the **whole** \Lexion4 folder system can be locked. When the teacher/speech therapist is making his/her customisation work in Lexion, all \Lexion4 folders should as usual be unlocked, i.e. the \Lexion4 folder and all the subfolders. A disadvantage with this second method might be (depending upon how the network is mapped) that the teacher/speech therapist must log on as a pupil/patient to be able to study results. There is on the other hand the possibility of e-mailing files to each other.

Results on a predetermined unit: If you, for example in a Citrix-system, want a predetermined path to the target for the users' results, another alternative can be used. The restrictions and privileges are the same as in the previous alternative. You, as an administrator, can create a text file in the \Lexion4 folder, named LOCKNET.DAT. On the first and only line of this file you specify the path you want as target for the user's results. For example, you write

H:/ (finish with a backslash) if that path is mapped as a personal path for the respective users. You may give the file LOCKNET.DAT write-protection if you like. Lexion registers this alternative and the path will be impossible to manipulate when the different teachers/speech therapists create new users. You may also place LOCKNET.DAT in another folder anywhere in the system. In that case, create a text file called LOCKNET.INI in the Lexion4 folder, and on the first and only line of that file, fill in the path specification for the LOCKNET.DAT file. If you use the shortcuts 'Lexion Login' or 'Lexion Direct' (see below), and you have a Lexion user with the same name as the local Windows variable %USERNAME%, that exercise archive will be opened directly without the need to enter name or password. Also archives with names such as %USERNAME%1, %USERNAME%2, ..., %USERNAME%9 will be opened automatically when Lexion starts. There are no disadvantages to this third alternative other than the complexity involved, and it is the most secure method. One might mention the disadvantage that the only way for a teacher/therapist to see the results of a user, is for the teacher/therapist to log in as a user, or for the user to e-mail the results to the teacher/therapist.

Login types for Lexion4.exe

Several Lexion shortcuts are created by the setup programs. You may delete those that are not needed in your system.

Command lines:

LEXION4.EXE

This command line is created by both setup programs, and the shortcut has the label '**Lexion Archives**'. Lexion starts by showing the archive window where a name must be selected before entering an exercises archive. A password has to be given if there is one.

LEXION4.EXE JENNIFER.USR

Lexion starts and enters the Jennifer archive directly. If there is a password it will be asked for. This shortcut is created on local installations (i.e. not recommended in network settings) when a new user is created by the teacher/therapist in Lexion. The shortcuts are located in the 'Lexion - Users' group in the Windows Start menu and are labelled with the **user names**.

LEXION4.EXE BLINDLOGIN

This command line is created by the client setup program, and the shortcut has the label '**Lexion Login**'. Lexion starts by showing a login window where you have to state both your name and your password. No user list is visible so one has to know the exact spelling of the name as well as the password which are case insensitive. If no password exists the name will be enough. Only after this the exercise archive will appear. Note: If there is a user archive with the same name as the local Windows variable %USERNAME%, that archive will be opened directly without the need to enter name or password.

LEXION4.EXE AUTOLOGIN

This command line is created by the client setup program, and the shortcut has the label '**Lexion Direct**'. If there is a user archive with the same name as the local Windows variable %USERNAME% (the current registered Windows user), that archive will be opened directly without the need to enter name or password. Otherwise Lexion starts by showing the archive window where a name must be selected before entering an exercises archive, and a password has to be given if there is one.

Automatised installation

For script installations there are the following arguments to the setup command:

/T	Install in Test mode. No files are installed.
/X pathname	Extracts files to pathname.
/Z pathname	Extracts files to pathname, then reboots.
/M	Runs installation in manual mode, prompting for system directories.
/M=filename	Specifies a value file for installation.
/M1	Displays the name of each self-registering .OCX or .DLL as it is registered.
/M5=dir_name	During installation, temporary files are written to the hard drive. On some locked-down machines with restricted privileges, these temporary files might fail to write, resulting in a failed installation. Use this command line option to specify a directory name for a directory to which the user has write privileges.
/S	Silent mode, automatic mode with no user choices.

© 2001 Wise Solutions, Inc. All Rights Reserved.

Command line example:

setup.exe /S /X m:\lexion4

performs a silent automatic installation to the folder m:\lexion4.

The arguments are valid for both setup programs (the Lexion main setup and the network client setup). (We take no responsibility for the use of these script commands.)

The Lexion folder structure

The files in the USR folder are the following:

RES, TBL	result values*
LOG	logbooks*
064	temporary files*
EPT	e-mailed results*
TXT, DOC, BMP	created by Notepad, Wordpad, etc.*
USR	user files
HLP	user descriptions
PRM	exercise settings
PRE	predefined profiles
INI	window values

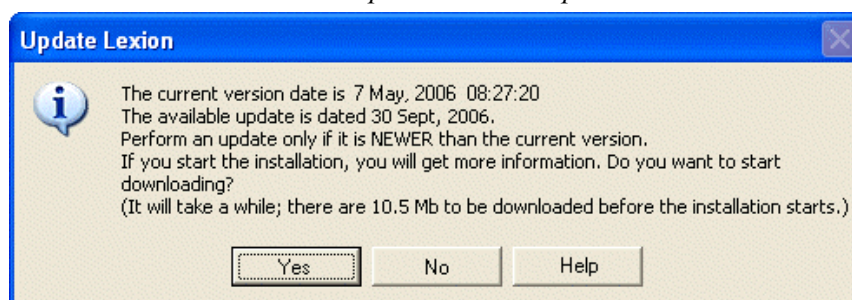
* Marked files change or are created only during exercise sessions, unmarked ones change or are created only when the teacher/therapist creates users. Marked files are redirected to network/mapped folder specified in Lexion when users are created, unmarked are not.

The files that may change or be added when a teacher/therapist creates lists and makes **adaptions** reside in the following **folders**:

BMP	new pictures
EMAIL	e-mail attachment files (out basket)
HLP	exercise instruction texts and recordings
ICONS	new exercise icons (if icon editor is present)
PROVIA	assessment files
REG	thumbnail example pictures
USR	user files
WAV	new recordings

Update Lexion

There is a command in the *Help* menu called *Update Lexion*.



You will be informed if there is a newer version available from our home page. If you decide to update, an installation program will be downloaded and started. Only program ('exe') files will be updated. Lexion is constantly improved and corrected and new versions will be released from time to time. The update command is also available in Mini-Lexion.

Uninstall

By uninstalling you remove Lexion completely from the hard disk. You must uninstall before you sell the computer or when for some other reason you do not want to keep the program on the hard disk:

- (Lexion installed a few files in \WINDOWS\SYSTEM32 (\WINNT\SYSTEM32) but none of them is unique for Lexion and can also belong to other software.)
- Go to the Control Panel.
- Click Add/Remove programs.
- Select Lexion and click Add/Remove.
- The uninstall program will start and the removal will take place.

Support

You are entitled to support if you own a Lexion licence.

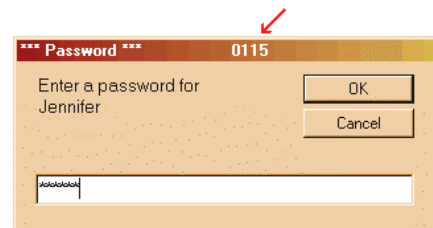
Before you call or fax or e-mail, try to find a solution by using the Help functions. For example, in the *Help* menu, select *Find Help about...* and fill in a suitable search string.

If the error occurs during an exercise, first check the current list of the exercise. Check that it follows the criteria stated in the Help function in the List editor. Or, select another list for the same exercise, and see if the error still occurs. If not, there is a fatal flaw in the previous list, causing an error that Lexion could not foresee. Try to correct the error in that list.

If you suspect a 'bug' in the program, please describe to us the exact circumstances in which the error occurs, and note down the error symptoms or the error message. Also, state your Windows version and Lexion version (found in the *Help* menu, *About Lexion*).

If you forget your password, note the number in the title bar of the password window before you contact us.

In order to conveniently create an e-mail message, select *Contact us...* in the *Help* menu.



Frölunda Data AB

Tel +46-31 769 55 60

Fax +46-31 29 54 30

info@lexion.co.uk

hallsvik@frolundadata.se

Lexion AB

martti.martens@logopedkonsult.se

olle.gunnilstam@logopedia.se

www.lexion.co.uk